

## Supplementary and Supporting Data

**Table 1S.** Prostate cancer incidence and mortality across continents (sorted from highest to lowest)

| Population                      | Incidence |      |       |           | Mortality |      |       |           |
|---------------------------------|-----------|------|-------|-----------|-----------|------|-------|-----------|
|                                 | Cases     | Rank | %     | Cum. risk | Cases     | Rank | %     | Cum. risk |
| Europe                          | 473,344   | 1    | 33.5  | 15.79     | 120,593   | 2    | 28.8  | 5.85      |
| Asia                            | 371,225   | 2    | 26.2  | 5.23      | 108,088   | 1    | 32.1  | 2.53      |
| Northern America                | 239,574   | 3    | 16.9  | 14.58     | 57,415    | 5    | 9.9   | 4.44      |
| Latin America and the Caribbean | 214,522   | 4    | 15.2  | 16.47     | 47,249    | 3    | 15.3  | 7.78      |
| Africa                          | 93,173    | 5    | 6.6   | 10.15     | 37,192    | 4    | 12.6  | 7.74      |
| Oceania                         | 22,421    | 6    | 1.6   | 16.21     | 4,767     | 6    | 1.3   | 6.50      |
| Total                           | 1,414,259 | -    | 100.0 | 13.07     | 375,304   | -    | 100.0 | 5.81      |

*Note: cum.risk: cumulative risk (the risk of developing a specific type of cancer at a certain age without any other cause of death).*

**Table 2S.** Prostate cancer incidence in Asian countries: new cases, age-standardized incidence rate, and crude incidence (sorted from highest to lowest)

| Countries   | Incidence (male) |      |      |      |            |
|-------------|------------------|------|------|------|------------|
|             | Case             | Rank | ASR  | Rank | Crude rate |
| China       | 115,426          | 1    | 10.2 | 28   | 15.6       |
| Japan       | 106,139          | 2    | 51.8 | 2    | 171.9      |
| India       | 34,540           | 3    | 5.5  | 37   | 4.8        |
| Turkey      | 19,444           | 4    | 42.5 | 4    | 46.7       |
| Korea       | 13,873           | 5    | 27.3 | 8    | 54.1       |
| Indonesia   | 13,563           | 6    | 11.6 | 26   | 9.8        |
| Iran        | 8,937            | 7    | 21.2 | 11   | 21.1       |
| Thailand    | 8,630            | 8    | 14.6 | 17   | 25.4       |
| Philippines | 8,242            | 9    | 23.4 | 9    | 15.0       |
| Viet Nam    | 6,248            | 10   | 12.2 | 24   | 12.9       |
| Pakistan    | 4,550            | 11   | 6.3  | 33   | 4.0        |
| Israel      | 3,290            | 12   | 56.1 | 1    | 76.4       |
| Bangladesh  | 2,441            | 13   | 3.6  | 42   | 2.9        |
| Malaysia    | 2,146            | 14   | 13.1 | 21   | 12.9       |

| Countries                    | Incidence (male) |      |      |      |            |
|------------------------------|------------------|------|------|------|------------|
|                              | Case             | Rank | ASR  | Rank | Crude rate |
| Singapore                    | 1,846            | 15   | 34.3 | 5    | 60.3       |
| Iraq                         | 1,117            | 16   | 12.9 | 22   | 5.5        |
| Syrian Arab Republic         | 1,083            | 17   | 19.0 | 14   | 12.4       |
| Kazakhstan                   | 1,028            | 18   | 12.8 | 23   | 11.3       |
| Lebanon                      | 1,027            | 19   | 28.5 | 7    | 29.9       |
| Georgia                      | 1,004            | 20   | 32.3 | 6    | 52.8       |
| Uzbekistan                   | 929              | 21   | 8.5  | 29   | 5.6        |
| Sri Lanka                    | 896              | 22   | 6.3  | 34   | 8.7        |
| Armenia                      | 892              | 23   | 45.8 | 3    | 64         |
| Myanmar                      | 800              | 24   | 4.0  | 40   | 3.1        |
| Saudi Arabia                 | 693              | 25   | 7.0  | 32   | 3.4        |
| Azerbaijan                   | 565              | 26   | 12.1 | 25   | 11.2       |
| Democratic Republic of Korea | 465              | 27   | 3.6  | 43   | 3.7        |
| Jordan                       | 451              | 28   | 15.8 | 16   | 8.7        |
| Afghanistan                  | 450              | 29   | 6.1  | 36   | 2.3        |
| Nepal                        | 329              | 30   | 3.0  | 45   | 2.5        |

| Countries                                   | Incidence (male) |      |      |      |            |
|---|------------------|------|------|------|------------|
|   | Case             | Rank | ASR  | Rank | Crude rate |
| United Arab Emirates                        | 270              | 31   | 13.4 | 19   | 3.9        |
| Kuwait                                      | 255              | 32   | 19.6 | 13   | 9.8        |
| Cambodia                                    | 244              | 33   | 5.3  | 38   | 3.0        |
| Gaza Strip and West Bank                    | 191              | 34   | 16.7 | 15   | 7.4        |
| Oman  | 189              | 35   | 13.8 | 18   | 5.6        |
| Yemen                                       | 168              | 36   | 2.8  | 46   | 1.1        |
| Kyrgyzstan                                  | 133              | 37   | 7.5  | 30   | 4.1        |
| Turkmenistan                                | 118              | 38   | 6.3  | 35   | 4.0        |
| Qatar                                       | 104              | 39   | 21.1 | 12   | 4.8        |
| Lao People's Democratic Republic of<br>Laos | 89               | 40   | 4.3  | 39   | 2.4        |
| Tajikistan                                  | 80               | 41   | 3.2  | 44   | 1.7        |
| Bahrain                                     | 51               | 42   | 13.3 | 20   | 4.6        |
| Brunei Darussalam                           | 40               | 43   | 23.0 | 10   | 17.6       |
| Mongolia                                    | 36               | 44   | 3.9  | 41   | 2.2        |
| Timor-Leste                                 | 30               | 45   | 7.5  | 31   | 4.5        |

| Countries | Incidence (male) |      |      |      |            |
|-----------|------------------|------|------|------|------------|
|           | Case             | Rank | ASR  | Rank | Crude rate |
| Maldives  | 17               | 46   | 11.0 | 27   | 5.0        |
| Bhutan    | 3                | 47   | 0.9  | 47   | 0.73       |

*Note: ASR: age-standardized incidence rate (the number of new cases of PCa reported per 100,000 individuals in the population, with age differences standardized to a standard population). The crude rate represents the total number of new cases of PCa reported per 100,000 individuals in the population.*

**Table 3S.** Human Development Index (HDI) and its components in Asian countries (sorted from highest to lowest HDI)

| Countries            | HDI   | Rank | The level of human development | Life expectancy at birth (LBE) | Mean school year | GNI/capita |
|----------------------|-------|------|--------------------------------|--------------------------------|------------------|------------|
| Singapore            | 0.939 | 1    |                                | 82.8                           | 11.9             | 90,919     |
| Japan                | 0.925 | 2    |                                | 84.8                           | 13.4             | 42,274     |
| Korea                | 0.925 | 3    |                                | 83.7                           | 12.5             | 44,501     |
| Israel               | 0.919 | 4    |                                | 82.3                           | 13.3             | 41,524     |
| United Arab Emirates | 0.911 | 5    |                                | 78.7                           | 12.7             | 62,574     |
| Saudi Arabia         | 0.875 | 6    |                                | 76.9                           | 11.3             | 46,112     |
| Bahrain              | 0.875 | 7    |                                | 78.8                           | 11.0             | 39,497     |
| Qatar                | 0.855 | 8    | Very high human development    | 79.3                           | 10.0             | 87,134     |
| Kuwait               | 0.831 | 9    |                                | 78.7                           | 7.3              | 52,920     |
| Brunei Darussalam    | 0.829 | 10   |                                | 74.6                           | 9.2              | 64,490     |
| Oman                 | 0.816 | 11   |                                | 72.5                           | 11.7             | 27,054     |
| Kazakhstan           | 0.811 | 12   |                                | 69.4                           | 12.3             | 23,943     |
| Malaysia             | 0.803 | 13   |                                | 74.9                           | 10.6             | 26,658     |
| Georgia              | 0.802 | 14   |                                | 71.7                           | 12.8             | 14,664     |
| Thailand             | 0.800 | 15   |                                | 78.7                           | 8.7              | 17,030     |

| Countries    | HDI   | Rank | The level of human development | Life expectancy at birth (LBE) | Mean school year | GNI/capita |
|--------------|-------|------|--------------------------------|--------------------------------|------------------|------------|
| Sri Lanka    | 0.782 | 16   |                                | 76.4                           | 10.8             | 12,578     |
| Iran         | 0.774 | 17   |                                | 73.9                           | 10.6             | 13,001     |
| China        | 0.768 | 18   |                                | 78.2                           | 7.6              | 17,504     |
| Armenia      | 0.759 | 19   |                                | 72.0                           | 11.3             | 13,158     |
| Maldives     | 0.747 | 20   |                                | 79.9                           | 7.3              | 15,448     |
| Azerbaijan   | 0.745 | 21   |                                | 69.4                           | 10.5             | 14,257     |
| Turkmenistan | 0.745 | 22   | High human development         | 69.3                           | 11.3             | 13,021     |
| Mongolia     | 0.739 | 23   |                                | 71.0                           | 9.4              | 10,588     |
| Uzbekistan   | 0.727 | 24   |                                | 70.9                           | 11.9             | 7,917      |
| Jordan       | 0.720 | 25   |                                | 74.3                           | 10.4             | 9,924      |
| Lebanon      | 0.706 | 26   |                                | 75.0                           | 8.7              | 9,526      |
| Indonesia    | 0.705 | 27   |                                | 67.6                           | 8.6              | 11,466     |
| Viet Nam     | 0.703 | 28   |                                | 73.6                           | 8.4              | 7,867      |
| Philippines  | 0.699 | 29   |                                | 69.3                           | 9                | 8,920      |
| Kyrgyzstan   | 0.692 | 30   | Medium human development       | 70.0                           | 11.4             | 4,566      |
| Iraq         | 0.686 | 31   |                                | 70.4                           | 7.9              | 9,977      |

| Countries                        | HDI   | Rank | The level of human development | Life expectancy at birth (LBE) | Mean school year | GNI/capita |
|----------------------------------|-------|------|--------------------------------|--------------------------------|------------------|------------|
| Tajikistan                       | 0.685 | 32   |                                | 71.6                           | 11.3             | 4,548      |
| Bhutan                           | 0.666 | 33   |                                | 71.8                           | 5.2              | 9,438      |
| Bangladesh                       | 0.661 | 34   |                                | 72.4                           | 7.4              | 5,472      |
| India                            | 0.633 | 35   |                                | 67.2                           | 6.7              | 6,590      |
| Lao People's Democratic Republic | 0.607 | 36   |                                | 68.1                           | 5.4              | 7,700      |
| Timor-Leste                      | 0.607 | 37   |                                | 67.7                           | 5.4              | 4,461      |
| Nepal                            | 0.602 | 38   |                                | 68.4                           | 5.1              | 3,877      |
| Cambodia                         | 0.593 | 39   |                                | 69.6                           | 5.1              | 4,079      |
| Myanmar                          | 0.585 | 40   |                                | 65.7                           | 6.4              | 3,851      |
| Syrian Arab Republic             | 0.577 | 41   |                                | 72.1                           | 5.1              | 4,192      |
| Pakistan                         | 0.544 | 42   |                                | 66.1                           | 4.5              | 4,624      |
| Afghanistan                      | 0.478 | 43   | Low human development          | 62.0                           | 3.0              | 1,824      |
| Yemen                            | 0.455 | 44   |                                | 63.8                           | 3.2              | 1,314      |
| Turkey                           | N/A   | N/A  |                                | N/A                            | N/A              | N/A        |
| Democratic Republic of Korea     | N/A   | N/A  | N/A                            | N/A                            | N/A              | N/A        |
| Gaza Strip and the West Bank     | N/A   | N/A  |                                | N/A                            | N/A              | N/A        |

*Note: N/A: Not available; GNI: Gross national income*

**Table 4S.** Estimated number of new PCa cases and deaths across continents from the current estimates to 2040, sorted from highest to lowest

| Population                      | Incidence              |      |             | Mortality              |      |             |
|---------------------------------|------------------------|------|-------------|------------------------|------|-------------|
|                                 | Increase in the number | Rank | Risk Change | Increase in the number | Rank | Risk Change |
| Europe                          | 130,512                | 1    | 27.5723     | 57,541                 | 2    | 53.2        |
| Asia                            | 349,434                | 2    | 94.13       | 135,911                | 1    | 112.7       |
| Northern America                | 56,235                 | 3    | 23.4729     | 31,041                 | 5    | 83.5        |
| Latin America and the Caribbean | 174,920                | 4    | 81.5394     | 63,405                 | 3    | 110.4       |
| Africa                          | 99,522                 | 5    | 106.8142    | 53,051                 | 4    | 112.3       |
| Oceania                         | 10,686                 | 6    | 47.6607     | 4,408                  | 6    | 92.5        |

Correlation between Health Indicators and Incidence/Mortality Rates

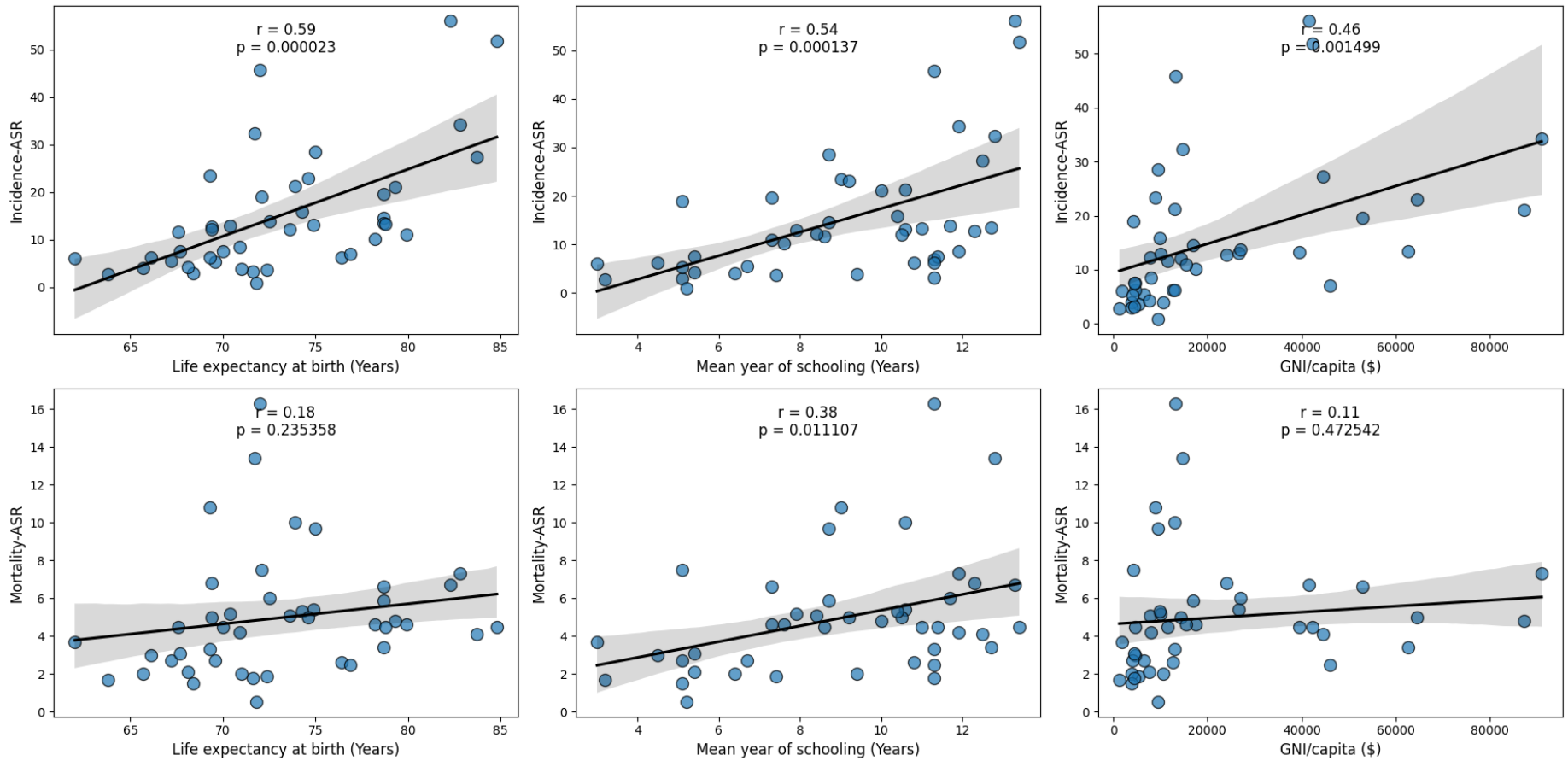


Figure 1S. Correlation between ASR incidence and mortality with HDI components